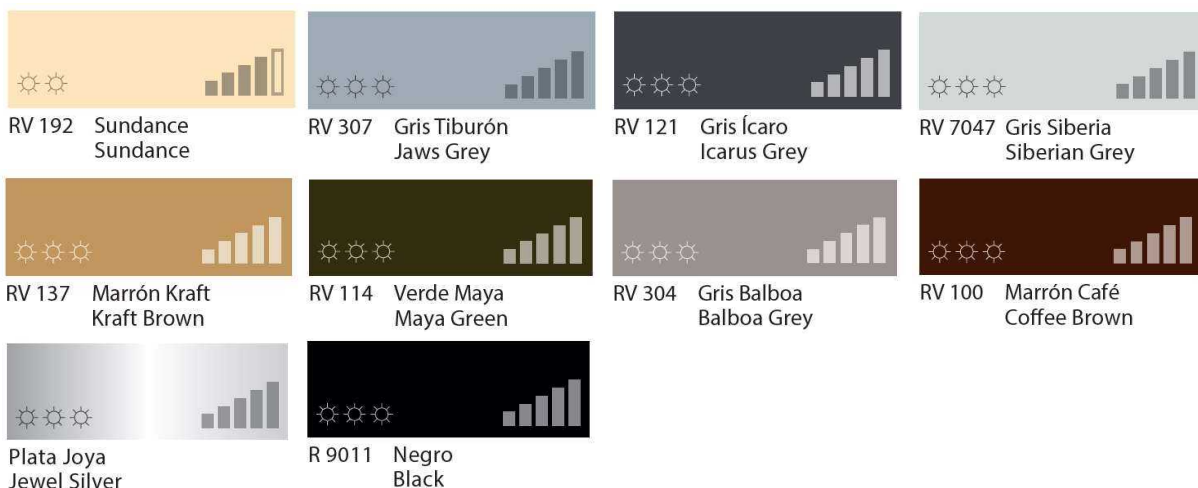


# Rejilla exterior entrada/salida RENair Ventis



## Especificaciones técnicas:

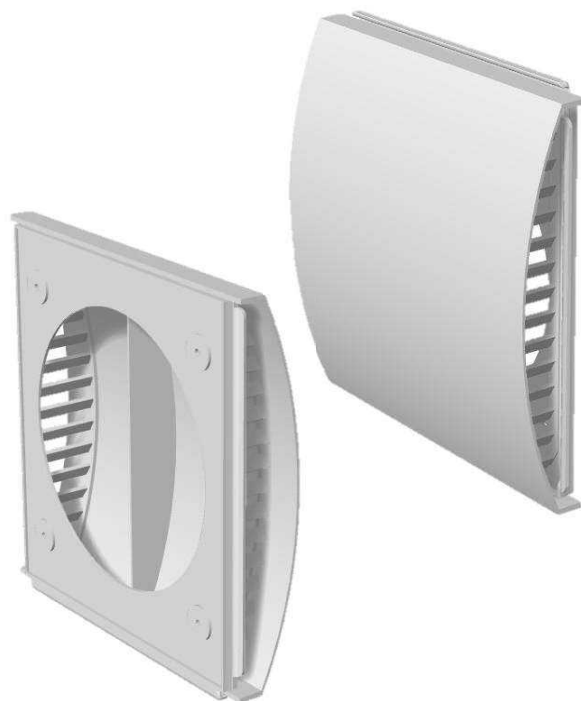
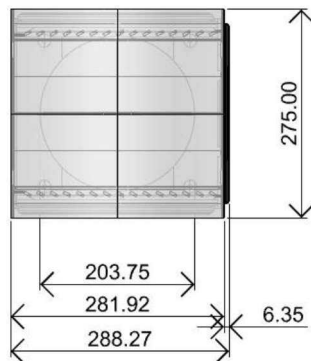
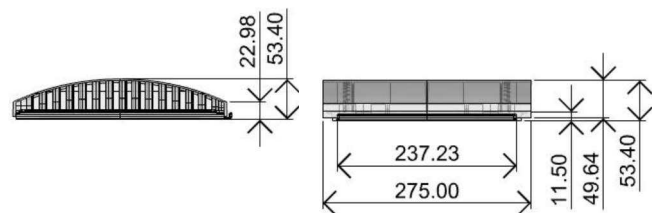
- Para uso en sistemas de ventilación de baja y media presión.
- Diseño universal: la entrada de aire VENTIS y la salida de aire VENTIS son homogéneas en términos de forma y color (color base: blanco).
- Posibilidad de pintar en cualquier color de la paleta disponible de Montana Colors.\*



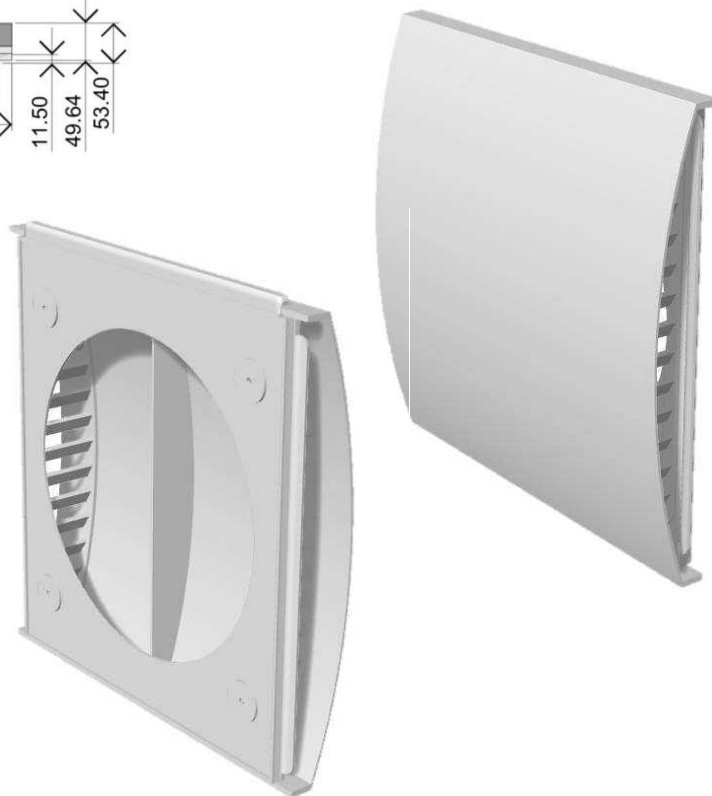
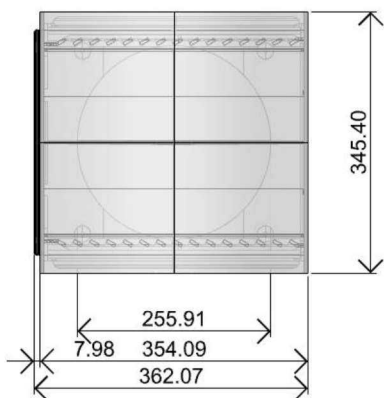
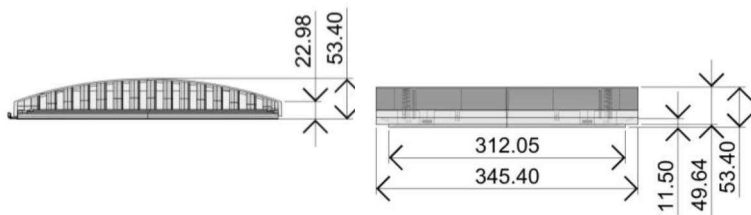
- Material: ABS - resistente a arañazos, agua, corrosión atmosférica y radiación UV,
- Se puede reciclar
- Posibilidad de pintar en cualquier color de la paleta disponible de Montana Colors.\*

Technical parameters of the K- <sup>®</sup> PLEX ST sealing mat		
PARAMETER	VALUE	TEST STANDARD
Temperature range	from -65°C to +85°C	EN 14706 EN 14707
Thermal conductivity $\lambda$ W/m·K	-20°C = 0,031 0°C = 0,033 +20°C = 0,035 +40°C = 0,037	EN 13787 EN ISO 8497
Risk of corrosion	Neutral pH (7)	EN 13468
Reaction to fire	Euroclass B-s3, d0	EN 13501-1
Ecological data	Without CFC and HCFC	
Material of execution	closed-cell foam rubber	

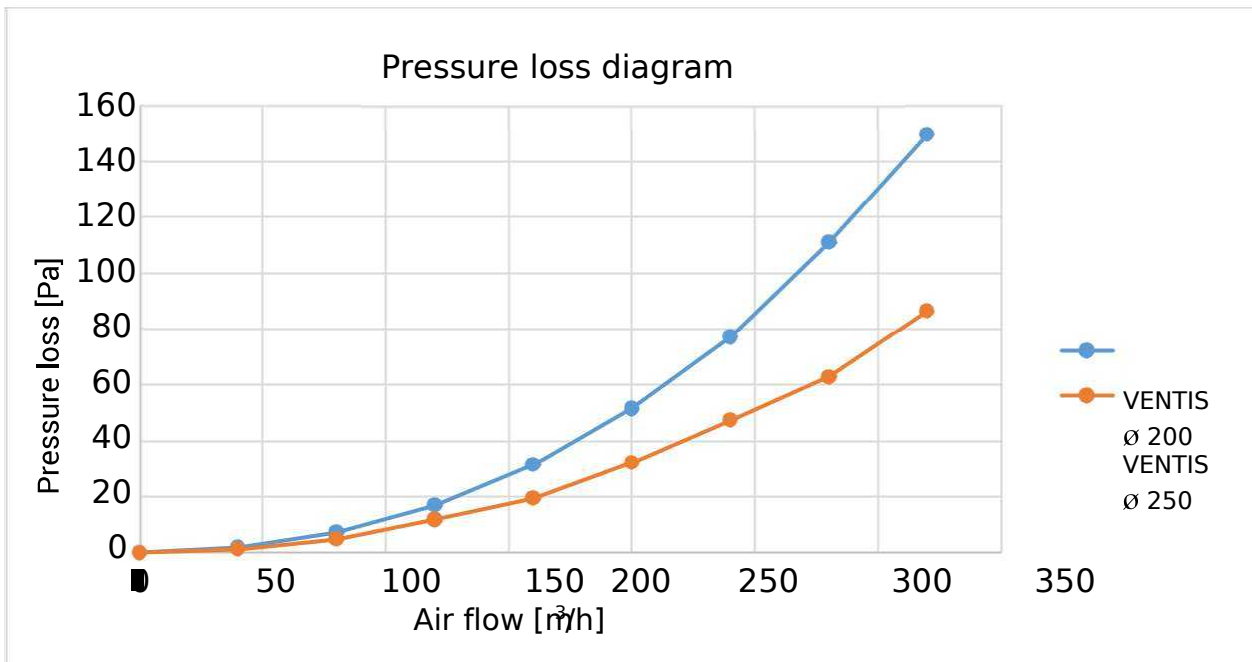
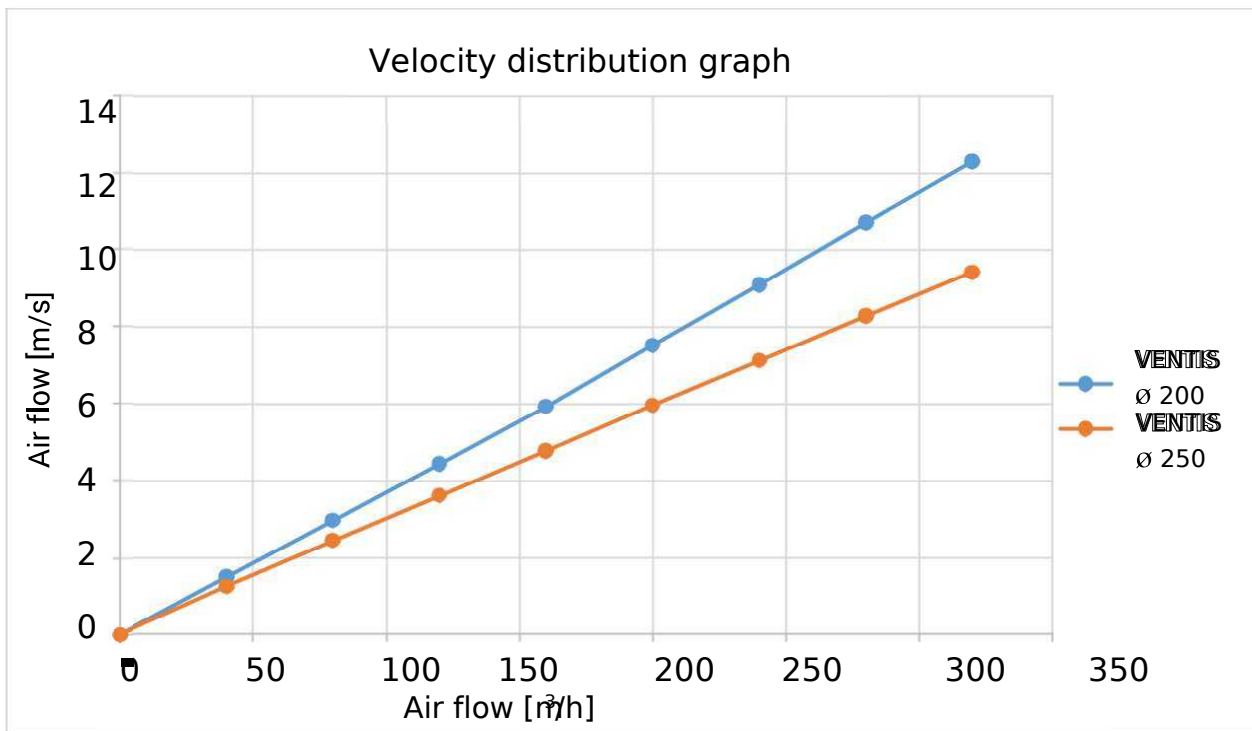
- Available sizes  $\varnothing$ 200 and  $\varnothing$ 250



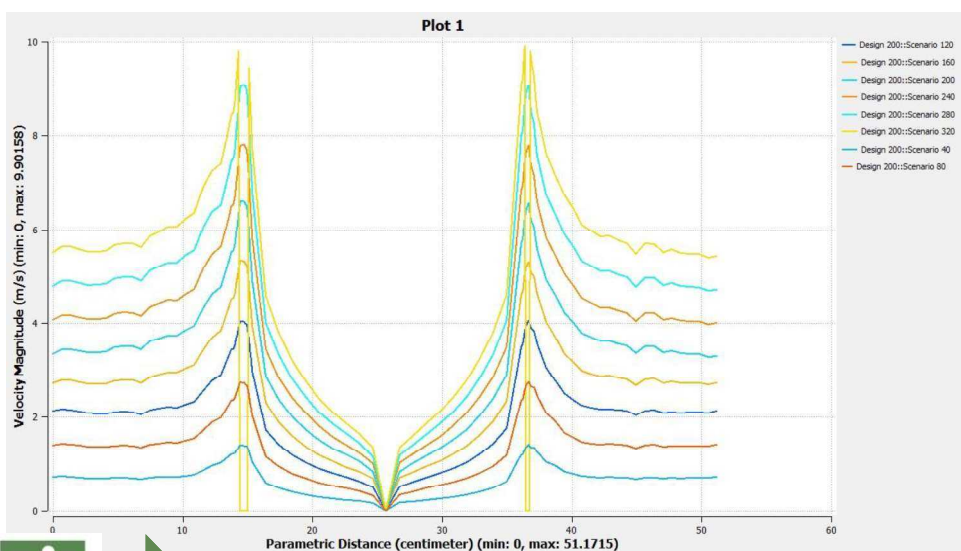
Intake/exhauste VENTIS ø200

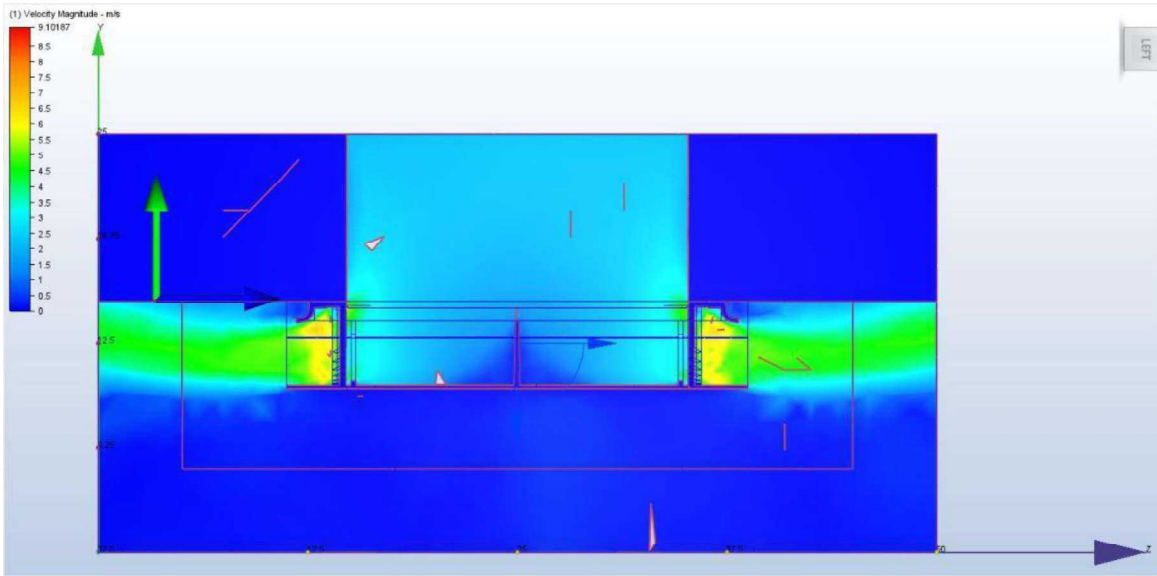


Intake/exhauste VENTIS ø250

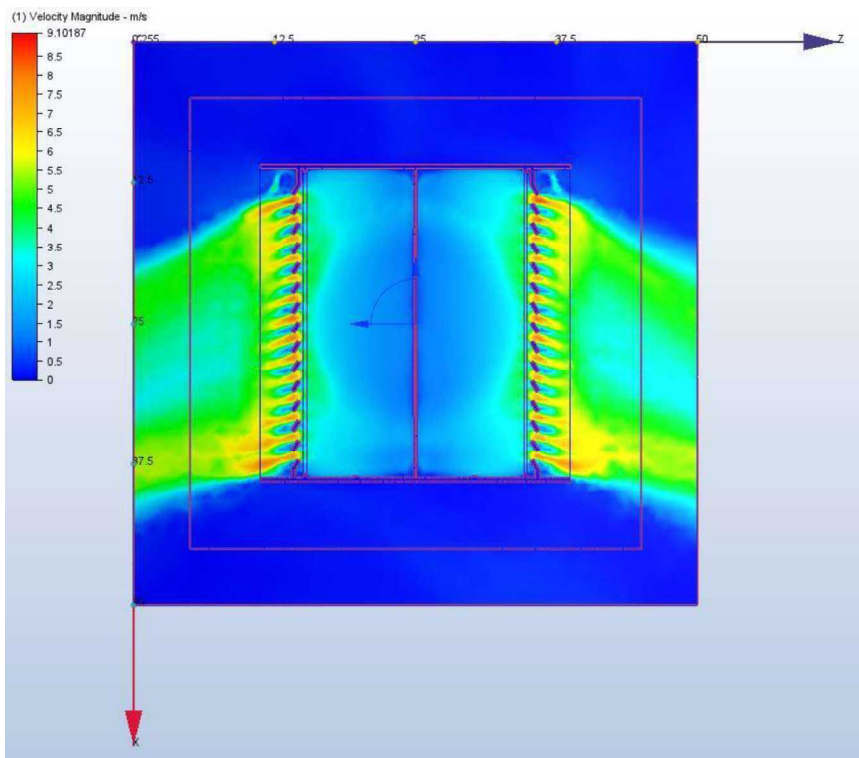


SPEED CHART WITH AIR FLOW THROUGH THE DIFFUSER

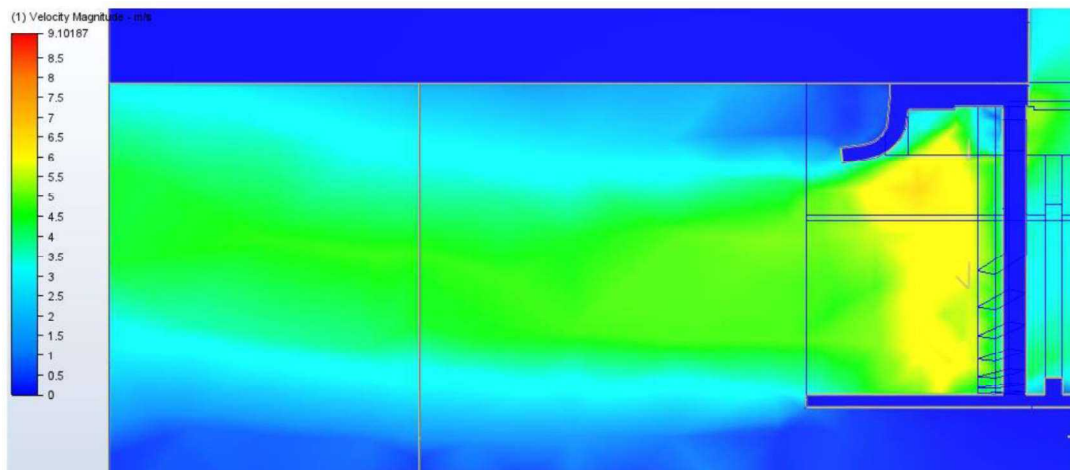




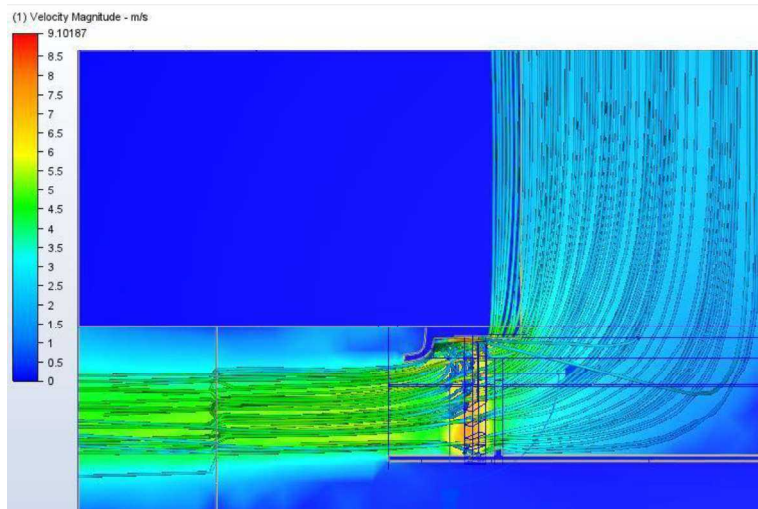
Velocity map in the YZ plane



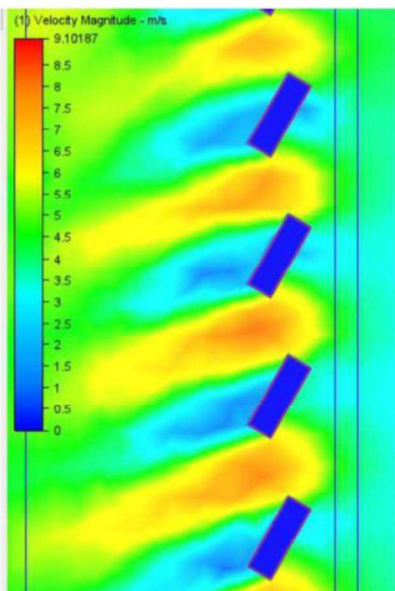
Velocity map in the YZ plane



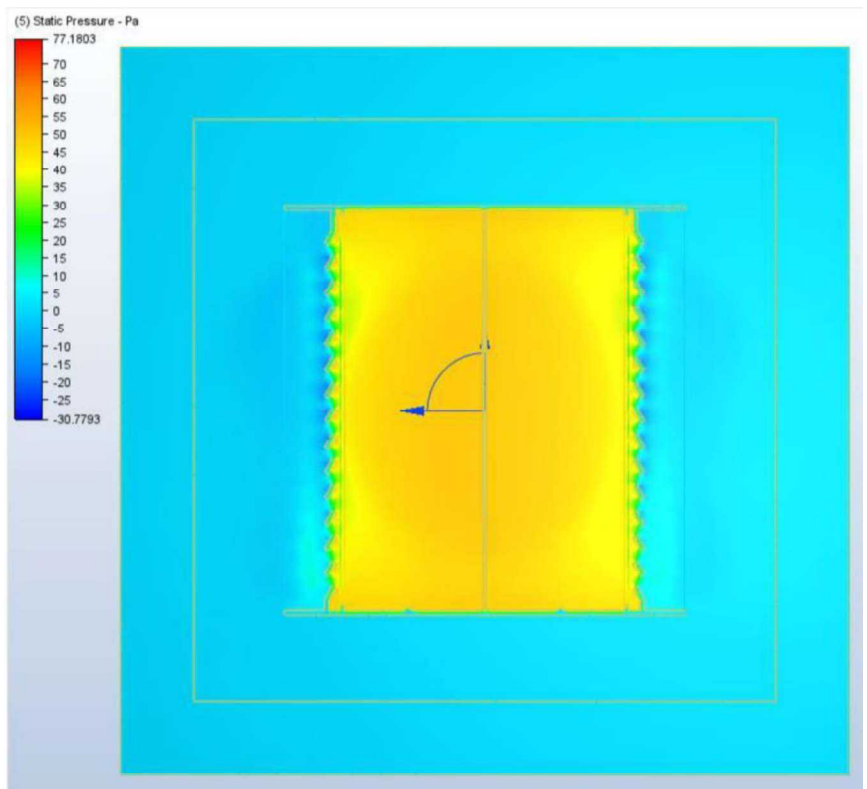
Air outlet from the diffuser



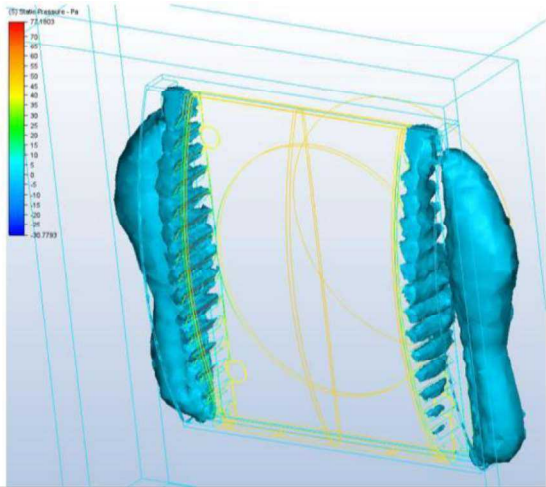
Distribution of flow lines



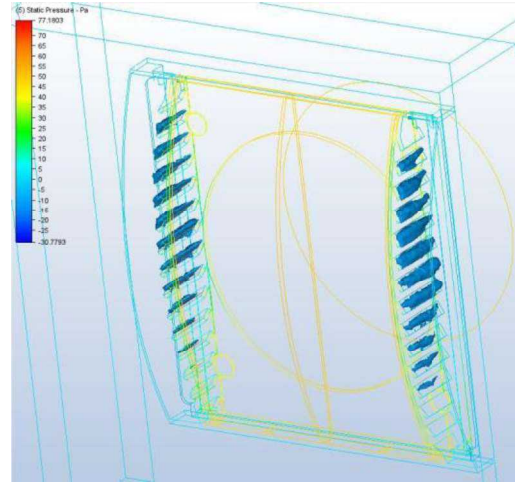
High speed zones



Map of pressure losses with the air flow through the diffuser

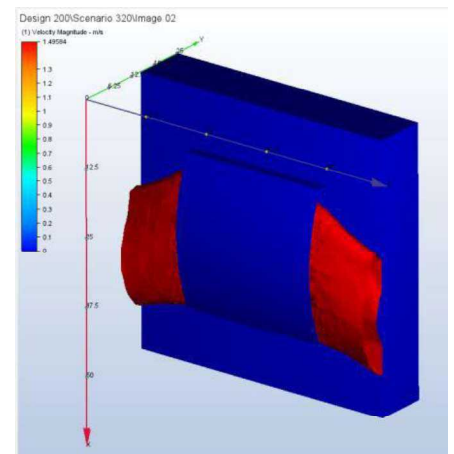
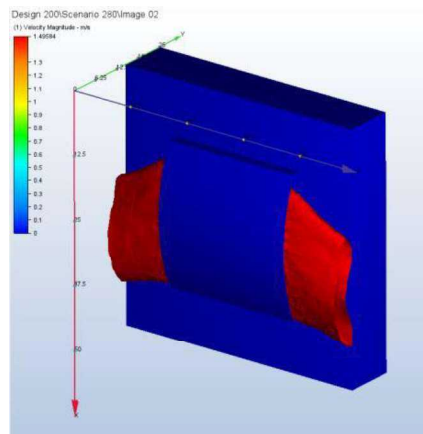
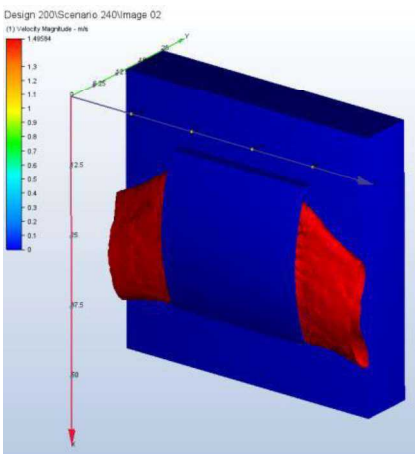


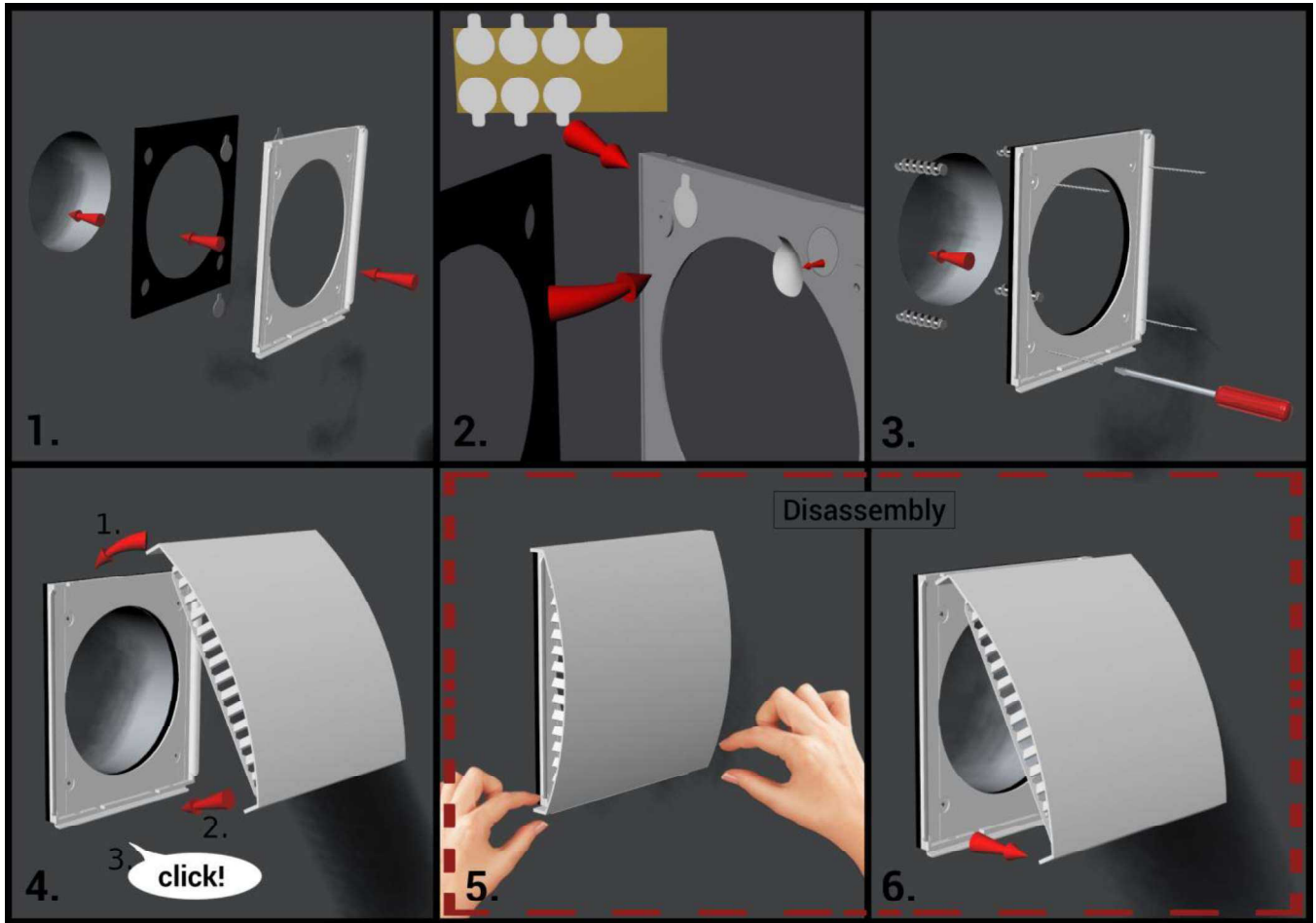
Vacuum zone in the range from -1Pa to -30Pa



Vacuum zone in the range from -10Pa to -30Pa

Izo area for the flow of 240 m<sup>3</sup>/h, 280 m<sup>3</sup>/h and 320 m<sup>3</sup>/h





## Installation

1. Prepare the Ventis wall air intake / exhaust base, the sealing mat and the supplied double-sided stickers. Pull out any unnecessary pieces of the mat to reveal 5 holes.
2. Attach the stickers to the back of the base to ensure the mat is properly attached. Peel off the protective papers from the stickers. Put the mat down, trying to align all the holes, and then press it down.
3. Secure the intake / exhaust base with the dowel screws. The base should be screwed in accordance with the markings (top - top, bottom - bottom). Screws in gradually so that the mat adheres evenly to the wall.  
Attention! Uneven tightening can deform the intake/exhaust base and damage the outer cover mounting mechanism.
4. Install the intake / exhaust cover, observing the top and bottom markings, starting from the top. Align the hooks on the cover with the holes at the base. Press the cover down until it clicks into place.

## Disassembly

5. Grasp the intake / exhaust cover on the bottom. Press both sides of the frame with your thumbs to release the fasteners.
6. Carefully pull on the cover to release the hooks from the base, then remove it.

\*ATTENTION! It is recommended to embed the exhaust / supply pipe in the wall at an angle of 3-5° to drain the condensate